

DESSERTO



CATALOGUE | 2022



Vegan Cactus Alternative To Leather From Mexico

New Favorite For Luxury

WWW.DSSERTO.COM.MX

DESSERTO

Cactus plant based material, as an alternative to leather.



Adriano Di Marti

Being conscious of the negative impact that the industries are causing to the environment by using animal and faux leather, the lack of sustainable material alternatives available to satisfy an ever-growing industrial demand, we created Desserto® — a sustainable cactus based biomaterial often distinguished by its great softness at touch and performance for a wide variety of applications while complying with the most rigorous quality and environmental standards of the industry. Desserto®, having its headquarters in Guadalajara, México, is celebrating its third anniversary in April 2022. Since the official launch, it has received

important international awards like the Green Product Award, MCFW Sustainable Fashion Award, PETA Compassionate Business Award, Good Design Award, Innovation Award by Architectural Digest and Samsung, also received a special mention as second runner up at the LVMH Innovation Award and favorite in materials category. Desserto® is committed to create new sustainable solutions and promoting ethical practices through the industry value chains to help build a better world through the fashion industry.

The perfect balance between sustainability and performance.

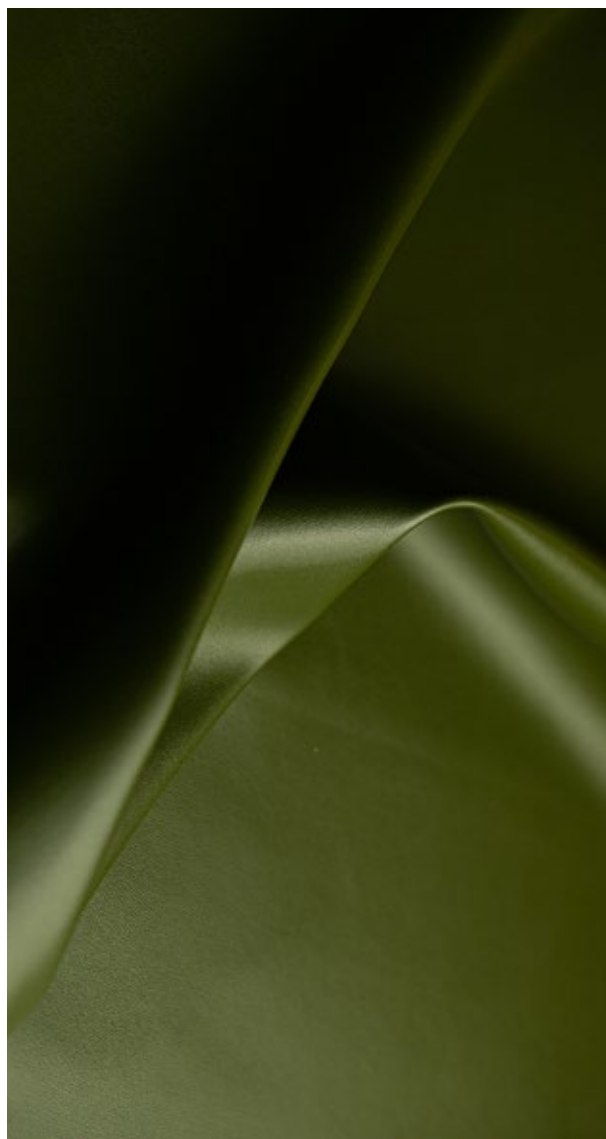


Top 10 sustainable facts of Desserto's organic cactus feedstock:

1. Biodiversity amelioration in the region.
2. Reverts Land Use Change (LUC).
3. Enrichment of soil micro-flora and micro-fauna through native and typical organic cactus afforestation.
4. Huge savings in water as no irrigation is applied.
5. Environmental preservation as no chemicals are used like herbicides or pesticides.
6. Cactus is left unharmed to enable repeated harvesting from the same plant.
7. Energy savings by drying the feed-stock in a solarium.
8. No cross-industry conflict as the byproduct is directed to the food industry in an increased value form which is more attractive, and stimulates the agricultural sector to plant more cactus.
9. Full vision and traceability of the farm to ensure sustainable social practices.
10. Technological enhancements at the fields.

Cactus is a natural carbon sink, it has a great CO₂ absorption capacity. From our 14 acres, we are able to absorb 8,100 tons of CO₂/year while at the farm we only generate 15.30 tons of CO₂ annually.

Catalogue



We offer a wide variety of materials free of Minimum Order Quantity (MOQ) and we can also customize materials to meet our customer's needs in terms of color, thickness, backing and performance.

Please note that our prices are EXW, and shipping is not included. All stock materials are subject to change with out prior notice in terms of availability, price, thickness, color variation, texture, backing, etc. Any modification of a SKU shown at this catalogue is considered as bespoke project.

If you need a specific same material for a long-term production, we suggest doing customized productions in order to avoid any possible change. Each customization material comes with a MOQ according the volume requested:

- First customized production its required a MOQ of 300 lineal meters, so you can try the material.
- Second customized production its required a MOQ of 1000 lineal meters, in case you require less quantity the minimum we can handle is 500 lineal meters with an extra surcharge of 10% by LM.

If you are a new customer, please determine if you want to place a meters order or first purchase a swatch-book to meet physically our materials. Swatch-book price is USD \$25.00 + Shipping and you can ask for it in hello@desserto.com.mx



Catalogue



Standard Line



Desserto materials that are always in stock.
Official colors.
There is no MOQ in any.

Recycled Line



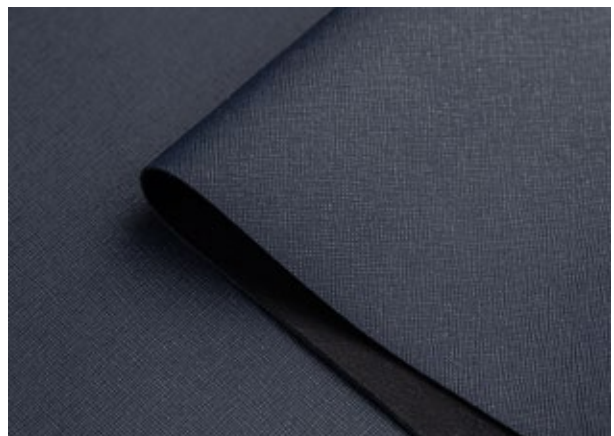
Desserto materials with recycled backings.
Limited stock.
Changing depending trends.

Luxury Line



Desserto materials with high-end hand-feel.
Limited stock.
Changing depending trends.

Temporary Line



Desserto materials that are temporarily in stock.
Season colors. Limited stock.
Changing depending trends.

Standard Line

Desserto's official line
created for general
applications.



SKU: 10002

COLOR: BLACK
TEXTURE: ROCKPORT

DESSERTO ORIGINAL SOFT
PRICE: 33 USD/ LM
THICKNESS: 1MM (+/- 10%)
BACKING: 65% POLYESTER/ 35%
COTTON
BACKING TYPE: KNIT
NO MOQ

Standard Line

Desserto's official line
created for general
applications.

SKU: 10003

COLOR: BEIGE
TEXTURE: ROCKPORT

DESSERTO ORIGINAL SOFT
PRICE: 33 USD/ LM
THICKNESS: 1MM (+/- 10%)
BACKING: 65% POLYESTER/ 35%
COTTON
BACKING TYPE: KNIT
NO MOQ



SKU: 10004

COLOR: RED
TEXTURE: PAMPA HELEN

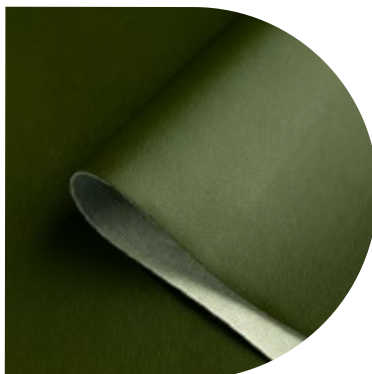
DESSERTO ORIGINAL SOFT
PRICE: 33 USD/ LM
THICKNESS: 1MM (+/- 10%)
BACKING: 65% POLYESTER/ 35%
COTTON
BACKING TYPE: KNIT
NO MOQ



SKU: 10005

COLOR: GREEN
TEXTURE: PAMPA HELEN

DESSERTO ORIGINAL SOFT
PRICE: 33 USD/ LM
THICKNESS: 1MM (+/- 10%)
BACKING: 65% POLYESTER/ 35%
COTTON
BACKING TYPE: KNIT
NO MOQ



Standard Line

Desserto's official line
created for general
applications.

SKU: ITA-002

COLOR: BLACK
TEXTURE: CRISTINA

PRICE: 33 USD/ LM
EXW ITALY
THICKNESS: 1MM (+/- 10%)
BACKING: 55% POLYESTER/ 45%
COTTON
BACKING TYPE: WOVEN
NO MOQ



SKU: 10011 *

COLOR: BLACK
TEXTURE: FREEPORT

DESSERTO ORIGINAL STIFF
PRICE: 36 USD/ LM
THICKNESS: 1MM (+/- 10%)
BACKING: 65% POLYESTER/ 35%
COTTON
BACKING TYPE: WOVEN
NO MOQ



SKU: ITA-001

COLOR: OFF - WHITE
TEXTURE: CRISTINA

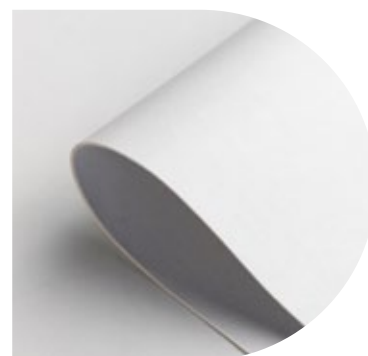
PRICE: 33 USD/ LM
EXW ITALY
THICKNESS: 1MM (+/- 10%)
BACKING: 55% POLYESTER/ 45%
COTTON
BACKING TYPE: WOVEN
NO MOQ



SKU: 10010 *

COLOR: OFF - WHITE
TEXTURE: FREEPORT

DESSERTO ORIGINAL STIFF
PRICE: 36 USD/ LM
THICKNESS: 1MM (+/- 10%)
BACKING: 65% POLYESTER/ 35%
COTTON
BACKING TYPE: WOVEN
NO MOQ



SKU: 10012

COLOR: BLACK
TEXTURE: RUSTIC

PRICE: 22 USD/ LM
THICKNESS: 0.5MM (+/- 10%)
BACKING: 100% RECYCLED
POLYESTER
BACK TYPE: KNIT



*These SKUs will be replaced for SKUs ITA-002/ITA-001 until stock last.

Recycled Line

Created with
recycled materials
backings.

SKU: 20006

COLOR: BLACK
TEXTURE: RUSTIC



DESSERTO 50/50 RECPC
PRICE: 29 USD/ LM
THICKNESS: 0.7MM (+/- 10%)
BACKING: 50% RECYCLED
POLYESTER/50% RECYCLED COTTON
BACKING TYPE: KNIT
NO MOQ

SKU: 20021

COLOR: FERRERO
TEXTURE: FREEPORT



DESSERTO 50/50 RECPC
PRICE: 39 USD/ LM
THICKNESS: 1.0MM (+/- 10%)
BACKING: 50% RECYCLED
POLYESTER/50% RECYCLED COTTON
BACKING TYPE: KNIT
NO MOQ

Recycled Line

Created with
recycled materials
backings.

SKU: 20009

COLOR: BLUE NAVY
TEXTURE: ROCKPORT



DESSERTO RECCOT
PRICE: 42 USD/ LM
THICKNESS: 1.5 MM (+/- 10%)
BACKING: 100% RECYCLED COTTON
BACKING TYPE: KNIT
NO MOQ

SKU: 20023

COLOR: LILAC
TEXTURE: FREEPORT



DESSERTO 50/50 RECPC
PRICE: 39 USD/ LM
THICKNESS: 1.0MM (+/- 10%)
BACKING: 50% RECYCLED
POLYESTER/50% RECYCLED COTTON
BACKING TYPE: KNIT
NO MOQ

Luxury Line

Desserto's high
end line



SKU: 30001

COLOR: BLACK
TEXTURE: FREEPORT

PRICE: 52 USD/ LM
THICKNESS: 1.3MM (+/- 10%)
BACKING: 100% COTTON INFUSED
WITH CACTUS
BACKING TYPE: WOVEN
NO MOQ

Temporary Line

This line may be vary depending on the season and stock.

SKU: 60001

COLOR: BLACK
TEXTURE: HELEN

PRICE: 55 USD/ LM
THICKNESS: 1.2 MM (+/- 10%)
BACKING: 100% RECYCLED COTTON
BACKING TYPE: KNIT
LIMITED STOCK



SKU: 50012

COLOR: OFF WHITE
TEXTURE: FREEPORT

PRICE: 38 USD/ LM
THICKNESS: 1.2 MM (+/- 10%)
BACKING: 100% POLYESTER
BACK TYPE: KNIT
NO MOQ



SKU: 20025

COLOR: BLUE NAVY
TEXTURE: KMP

PRICE: 40 USD/ LM
THICKNESS: 1.2 MM (+/- 10%)
BACKING: 50% RECYCLED POLYESTER/50% RECYCLED COTTON
BACKING TYPE: KNIT
LIMITED STOCK



Temporary Line

This line may be vary
depending on the
season and stock.

SKU: 30055

COLOR: BLUE NAVY
TEXTURE: HELEN



PRICE: 52 USD/ LM
THICKNESS: 1.3 MM (+/- 10%)
BACKING: 100% COTTON INFUSED WITH CACTUS
BACKING TYPE: WOVEN
LIMITED STOCK

SKU: 10026

COLOR: BLACK
TEXTURE: HELEN



PRICE: 33 USD/ LM
THICKNESS: 1 MM (+/- 10%)
BACKING: 65% POLYESTER/ 35% COTTON
BACK TYPE: KNIT
NO MOQ

Special Offer 2022

Offer valid while
stock last

This line includes remaining stock from past customized productions.
Please note that formulation, construction, quality, and performance for
those materials are made from specific customer requirements.

SKU: 10114

COLOR: BLACK
TEXTURE: CABRETA



PRICE: 28 USD/ LM
THICKNESS: 0.8 MM(+/-10%)
BACKING: 100% RECYCLED
NYLON
BACKING TYPE: KNIT

SKU: 10200

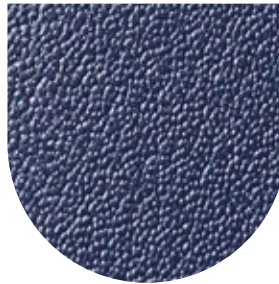
COLOR: OFF WHITE
TEXTURE: FREEPORT



PRICE: 33 USD/ LM
THICKNESS: 1.1 MM(+/-10%)
BACKING: 100% COTTON
BACKING TYPE: WOVEN

SKU: 10031

COLOR: BLUE NAVY
TEXTURE: FREEPORT



PRICE: 25 USD/ LM
THICKNESS: 1.2 MM(+/-10%)
BACKING: 65% POLYESTER / 35%
COTTON
BACKING TYPE: WOVEN

SKU: 10033

COLOR: OFF WHITE
TEXTURE: FREEPORT



PRICE: 34 USD/LM
THICKNESS: 1.2 MM(+/-10%)
BACKING: 100% COTTON
BACKING TYPE: WOVEN

SKU: 30051

COLOR: BLACK
TEXTURE: FREEPORT



PRICE: 36 USD/ LM
THICKNESS: 1 MM(+/-10%)
BACKING: 100% RECYCLED
NYLON
BACKING TYPE: KNIT

SKU: 10032

COLOR: GREY
TEXTURE: FREEPORT



PRICE: 25 USD/ LM
THICKNESS: 1 MM(+/-10%)
BACKING: 65% POLYESTER/
35% COTTON
BACKING TYPE: WOVEN

SKU: 30058

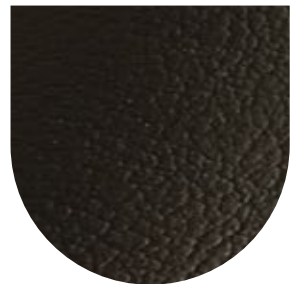
COLOR: BLUE NAVY
TEXTURE: SABAGO



PRICE: 50 USD/ LM
THICKNESS: 1.3 MM(+/-10%)
BACKING: 100% COTTON
INFUSED WITH CACTUS
BACKING TYPE: WOVEN

SKU: 10036

COLOR: BLACK
TEXTURE: R86



PRICE: 29 USD/ LM
THICKNESS: 0.6 MM(+/-10%)
BACKING: 100% RECYCLED
POLYESTER
BACKING TYPE: KNIT

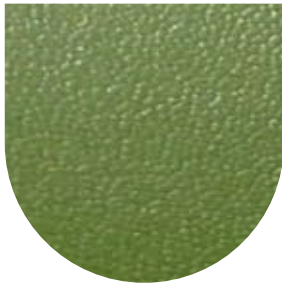
Special Offer 2022

Offer valid while
stock last

This line includes remaining stock from past customized productions.
Please note that formulation, construction, quality, and performance for
those materials are made from specific customer requirements.

SKU: 10201

COLOR: GREEN
TEXTURE: FREEPORT



PRICE: 33 USD/ LM
THICKNESS: 1.1 MM(+/-10%)
BACKING: 100% COTTON
BACKING TYPE: WOVEN

SKU: 10202

COLOR: BEIGE
TEXTURE: FREEPORT



PRICE: 33 USD/ LM
THICKNESS: 1.1 MM(+/-10%)
BACKING: 100% COTTON
BACKING TYPE: WOVEN

SKU: 10101

COLOR: BLACK
TEXTURE: FREEPORT



PRICE: 34 USD/ LM
THICKNESS: 1 MM(+/-10%)
BACKING: 65% POLYESTER / 35%
COTTON
BACKING TYPE: WOVEN

SKU: 10037

COLOR: SAND PEBBLE
TEXTURE: ROCKPORT



PRICE: 30 USD / LM
THICKNESS: 1 MM (+/-10%)
BACKING: 65% POLYESTER / 35%
COTTON
BACKING TYPE: KNIT

SKU: 10038

COLOR: BLACK BURGUNDY
TEXTURE: ROCKPORT



PRICE: 32 USD USD/ LM
THICKNESS: 1 MM(+/-10%)
BACKING: 65% POLYESTER / 35%
COTTON
BACKING TYPE: KNIT

SKU: 30034

COLOR: SANDSHELL
TEXTURE: FREEPORT



PRICE: 45 USD/ LM
THICKNESS: 1.3 MM (+/-10%)
BACKING: 100% COTTON
INFUSED WITH CACTUS
BACKING TYPE: WOVEN

SKU: 10039

COLOR: DARK TEAL
TEXTURE: ROCKPORT



PRICE: 35 USD/ LM
THICKNESS: 1.1 MM (+/-10%)
BACKING: 65% POLYESTER / 35%
COTTON
BACKING TYPE: KNIT

SKU: 40005

COLOR: BLACK
TEXTURE: FREEPORT



PRICE: 30 USD/ LM
THICKNES: 1 MM (+/-10%)
BACKING: 100% POLYESTER
BACKING TYPE: KNIT

Customized materials



If you require a custom material your development will be subjected to a 400 linear meter MOQ.

A Lab Dip size sample will be developed for your approval prior to production, development fee is USD \$100.00 for aesthetics (per lab-dip or / and texture), if further technical characteristics are required, costs may vary.

Make your own material mix:
THICKNESS: 0.7 mm to 1.8 mm

Textures



Rockport



Freeport



Helen



Rustic

Colors



Cactus Green



Tuna Red



Sand Beige



Midnight Black

Backings



65/35
Polycotton



100%
Cotton/Polyester



Recycled
Fibers



100% cotton
infused with cactus

Early Life Cycle Assessment



Ced (MJ) Cumulative Energy Demand

Cradle to gate (per m2 leather)
 - Desserto® 34.33
 - Animal leather 335.84
 - PU 92.93



GHG Carbon (KGCO2EQ.)

Cradle to gate (per m2 leather)
 - Desserto® 1.39
 - Animal leather 27.30
 - PU 4.81



Eutrophication (KGPO4 3-EQ.)

Cradle to gate (per m2 leather)
 - Desserto® 0.0005
 - Animal leather 0.0030
 - PU 0.0031



Water Use (M3)

Cradle to gate (per m2 leather)
 - Desserto® 0.02
 - Animal leather 32.95
 - PU 2.93



Ghg Carbon With Waste Incineration (KGCO2EQ.)

Cradle to gate (per m2 leather)
 - Desserto® 1.80
 - Animal leather 27.30
 - PU 5.85



(CO2) Carbon Negative Farming

In only 14 acres of organic cactus plantations, we can absorb 8,100 tons of CO2 per year, while at the farm we only generate 15.30 tons of CO2 annually.

The early stage LCA follows the ISO 14040 and 14044 LCA guidelines. These results are based on early-stage life cycle analysis conducted on Desserto® products following life cycle analysis related ISO guidelines (14040 and 14044). These results are based on preliminary data and estimates for manufacturing process and materials in the relevant supply chains. These results are meant to provide an understanding of potential

sustainability related impacts /benefits of the product based on life cycle impact assessment principles. Any comparisons provided with other products are based on approximations and averages where applicable. It is recommended to use your own specific benchmarks for comparison purposes. If you have any question, please contact us directly in the contact page.

Certifications and Compliances



Global Press

VegNews **vegconomist** FASHIONUNITED

The Guardian **Forbes** **VOGUE** **BAZAAR**

Iconic Collaborations

FOSSIL

KARL
KARL LAGERFELD

H&M

adidas

GIVENCHY

Desserto Care

Caring of your
Desserto fabric

This product is highly organic, and as your skin it requires care.

- Use only water base adhesive, do not use solvents.
- To maintain clean upholstered furniture and with a good appearance, use a mild soap solution and remove it completely using white cotton cloth dampened in water. All light colors require more frequent cleaning.
- Do not clean with solvents such as alcohol, acetone, paint thinner, bleach, oils, vinegar, waxes, silicones, armor all, stove (continental soda) or detergent cleaners, as these cause permanent damage in the material.
- Do not mark the furniture with an ink pen, ink could be absorbed into the product causing a permanent stain.
- For spills such as beer, wine, juices, soft drinks liquor, coffee, tea or chocolate simply clean the stain with a solution of mild liquid shampoo type cleaner water, dilute according to the instructions for use. Rinse with a cloth soaked in water to remove completely the excess. Dry the surface with a dry white cotton cloth.

Clean the spill as soon as possible especially if the liquid has a strong color.

-
- Sauce stains should be cleaned immediately to prevent staining.
-
- Prevent contact with suntan oils. In case this happens clean as soon as possible with liquid soap, try shampoo.
-
- Our products are protected to not transfer color to other materials, however some accessories with poor color fixation could transfer to our materials, if this happens, immediately wipe the stain with shampoo and a white cotton cloth.

You can also use a solution of half water and half disinfectant. Preferably free of chlorine. Then rinse with water and dry.

-
- Use a solution using 0.5% hypochlorite of sodium in water, rinse with water and dry.
-

Desserto Care

Caring of your
Desserto fabric

Important to know...

- The customer is responsible to test the product before using it, to confirm that the material is adequate for the process and final product use.
- The final use of the material is the customer's responsibility, Desserto cannot assume any responsibility if the material is used in a different application than suggested or recommended.
- Any warranty given by the clients to their final consumer without prior written agreement with Desserto remains under the strict responsibility of the client.
- The product data or thickness of the product at stock may vary without notice.
- The color deviation from lab dips and productions is $E < 2$.
- Desserto materials endure processes with up to 170 degrees Celsius under specific conditions.

Thank you!



@desserto.pelle



@desserto.pelle

WWW.DSSERTO.COM

